



Electrical Delivery Bed

Model 235-G-02



strahlend

Delivery Beds

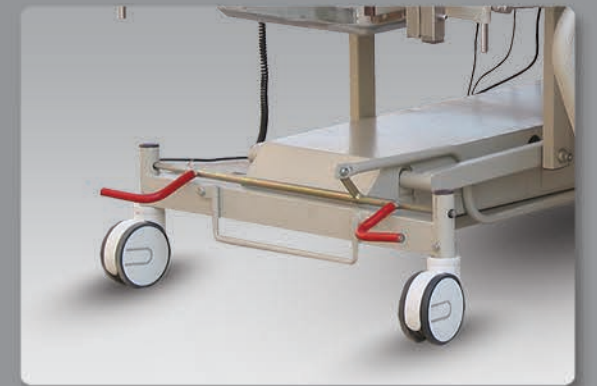
Model 235-G-02

The Delivery beds 235-G-02 represents the best value for money in a labour and delivery system.

It has been designed using the extensive consultation and experiences of medical professionals as well mothers and midwives around the country.

Just some of the salient features include:

- Electrical backrest and height adjustment for ease of use and maximum comfort.
- Greater choice of safe and comfortable delivery positions.
- A wide range of accessories included with the bed.
- Trendelenburg and Reverse trendelenburg facility using manual clutch system.
- Solid construction with constant center of gravity for stabilized control.
- Easily washable panels, sideguards and foam mattress.
- Centrally locking castors dual castors as standard.



Central Locking Dual Castors for easy movement and maneuverability of the bed.



Tilt facility using clutch system. Easy and stepless tilt is achieved using this system for the ease of the nursing staff



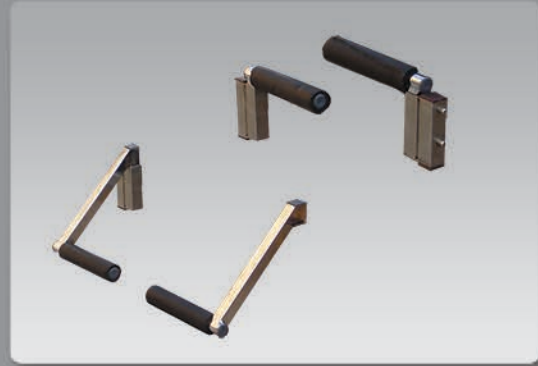
Shown here with leg section retracted. This position provides maximum access for the delivery team.

Delivery Beds

Model 235-G-02



High Quality washable 4" Foam Mattress



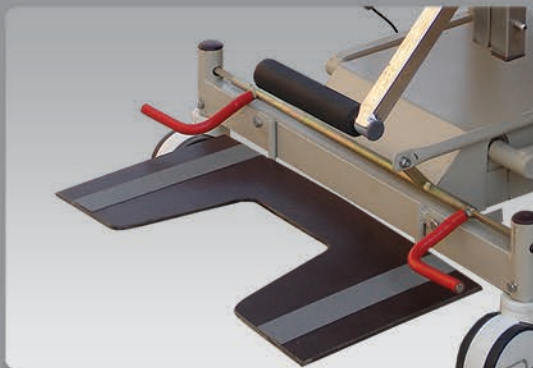
High and Low leg supports



Lithotomy Poles



Stainless Steel Fluid Collection Bowl



Foot Rest



strahlend

Strahlend

739-A, Punjab Small Industrial Estate, Sargodha Road, Faisalabad, Pakistan.

Phone +92 41 8810077/8810078 **Fax** +92 41 8810079

Email info@strahlendonline.com **Web** www.strahlendonline.com